

# TOMATO



# STRAWBERRY



# SWEETCORN



# GREEN BEAN



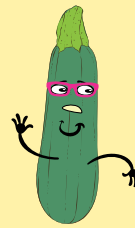
# ASPARAGUS



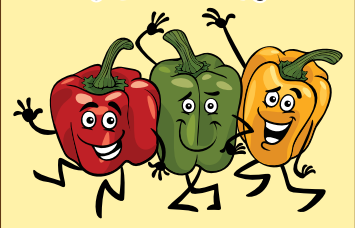
# CUCUMBER



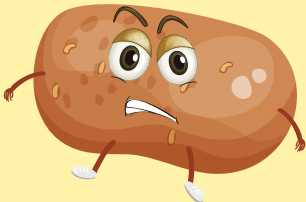
# ZUCCHINI



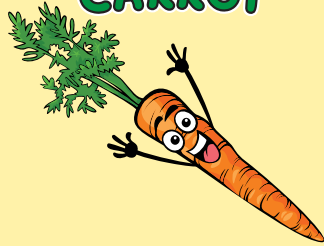
# PEPPER



# POTATO



# CARROT



# ONION



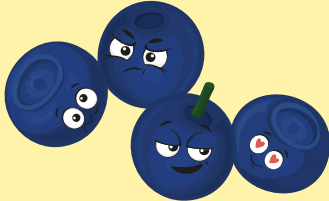
# MUSKMELON



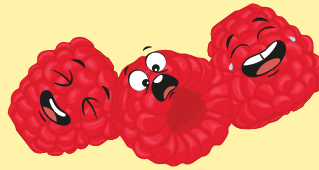
# WATERMELON



# BLUEBERRY



# RASPBERRY



# PEACH



# PUMPKIN



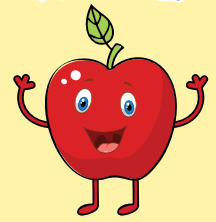
# GOURD



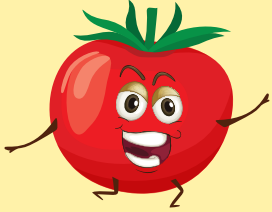
# SQUASH



# APPLE

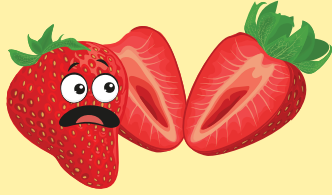


# TOMATO



- Grows on Plant
- Fruit Starts as Flowers
- Eat Seeds
- Usually Grown from Seed
- Don't Eat Entire Fruit

# STRAWBERRY



- Grows on Plant
- Fruit Starts as Flowers
- Eat Seeds
- Usually Grown by Propagation
- Don't Eat Entire Fruit

# SWEETCORN



- Grows on Plant
- Flowers Don't Produce Fruit
- Eat Seeds
- Usually Grown from Seed
- Don't Eat Entire Fruit

# GREEN BEAN



- Grows on Plant
- Fruit Starts as Flowers
- Eat Seeds
- Usually Grown from Seed
- Don't Eat Entire Fruit

# ASPARAGUS



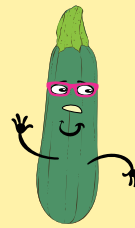
- Stalk is the Fruit
- Flowers Don't Produce Fruit
- Seeds not Eaten
- Usually Grown by Propagation
- Don't Eat Entire Fruit

# CUCUMBER



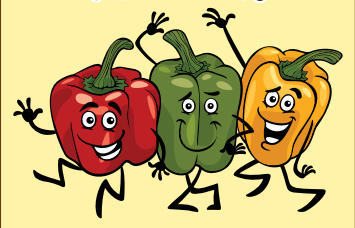
- Grows on Plant
- Flowers Bears Fruit
- Eat Seeds
- Usually Grown from Seed
- Don't Eat Entire Fruit

# ZUCCHINI



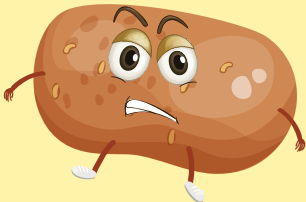
- Grows on Plant
- Flowers Bears Fruit
- Eat Seeds
- Usually Grown from Seed
- Don't Eat Entire Fruit

# PEPPER



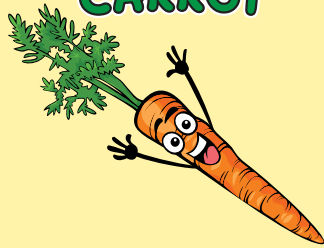
- Grows on Plant
- Flowers Bears Fruit
- Seeds not Eaten
- Usually Grown from Seed
- Don't Eat Entire Fruit

# POTATO



- Root/Tuber Fruit
- Flowers Don't Produce Fruit
- Seeds not Eaten
- Usually Grown by Propagation
- Don't Eat Entire Fruit

# CARROT



- Root/Tuber Fruit
- Flowers Don't Produce Fruit
- Seeds not Eaten
- Usually Grown from Seed
- Don't Eat Entire Fruit

# ONION



- Root/Tuber Fruit
- Flowers Don't Produce Fruit
- Seeds not Eaten
- Usually Grown from Seed
- Don't Eat Entire Fruit

# MUSKMELON



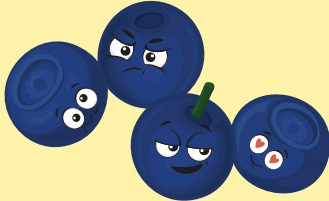
- Grows on Vine
- Flowers Bears Fruit
- Seeds not Eaten
- Usually Grown from Seed
- Don't Eat Entire Fruit

# WATERMELON



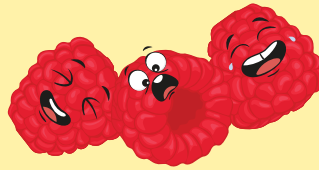
- Grows on Vine
- Flowers Bears Fruit
- Seeds not Eaten
- Usually Grown from Seed
- Don't Eat Entire Fruit

# BLUEBERRY



- Grows on Plant
- Flowers Bears Fruit
- Eat Seeds
- Usually Grown by Propagation
- Don't Eat Entire Fruit

# RASPBERRY



- Grows on Plant
- Flowers Bears Fruit
- Eat Seeds
- Usually Grown by Propagation
- Don't Eat Entire Fruit

# PEACH



- Grows on Tree
- Flowers Bears Fruit
- Seeds not Eaten
- Usually Grown by Propagation
- Don't Eat Entire Fruit

# PUMPKIN



- Grows on Vine
- Flowers Bears Fruit
- Eat Seeds
- Usually Grown from Seed
- Don't Eat Entire Fruit

# GOURD



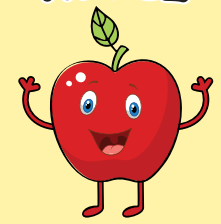
- Grows on Vine
- Flowers Bears Fruit
- Seeds not Eaten
- Usually Grown from Seed
- Don't Eat Entire Fruit

# SQUASH



- Grows on Vine
- Flowers Bears Fruit
- Seeds not Eaten
- Usually Grown from Seed
- Don't Eat Entire Fruit

# APPLE



- Grows on Tree
- Flowers Bears Fruit
- Seeds not Eaten
- Usually Grown by Propagation
- Don't Eat Entire Fruit



# INSTRUCTIONS

1. With one **Page A** per group of two students, students should cut apart squares on **Page A** and place them fall face down. Each student selects and hides one square so the other student doesn't know Whatcha' Pickin.
2. Students play in teams of two. Each student has a copy of **Page B** and with squares uncut. They take turn guessing characteristics about their hidden square. Eliminated squares can be 'marked off' on **Page B** with tokens, coins, or scraps of paper.
3. When students are ready to guess, they say, "Are you picking ..."

## BASIC QUESTIONS

Perfect for Young Students

### Sample Questions

Are you picking something...

- red (or green, or yellow, or any color)?
- that has more than one item in the picture?
- is wearing glasses?
- has arms?
- has the letter 'A' in name?
- is picked in fall?
- gets cooked before eating?

## ADVANCED QUESTIONS

Perfect for 2nd Grade+ Students

Try asking at least 3 advanced questions before using basic questions. See the squares under each character for ideas and as a guide for the correct answer.



### Usually Grown from Seed?

Most crops can technically be grown from seed, but cuttings and other methods may be common



### What type of plant?

Plant, vine, tree, or root/tuber?



### Do Flowers Produce Fruit?

The part we eat sometimes starts as a flower, but some grow other ways



### Do we normally eat the seeds?

Sometimes we do, and sometimes we cut them out (exceptions apply).



### Eat Entire Fruit?

Not counting the stem, do we usually eat everything or is there parts we cut away



© 2023 Skelly's Farm Market

This page is an exclusive resource for our field trip visitors and may not be reproduced except by those teachers. Contact [farmers@skellysfarmmarket.com](mailto:farmers@skellysfarmmarket.com) for licensing or other use.